

Solar Salt Production Site Winch Tower & Bridge

Particular attention had to be paid to the extremely corrosive environment the winch tower would sit in – this meant that the majority of conventional materials would be eliminated for selection.

Our client’s engineering team worked in close conjunction with our FRP design and development personnel throughout the whole project to build a lightweight, corrosion resistant and cyclone rated structure that was capable of supporting a heavy duty winch with a S.W.L. of 5 tonnes. The resulting construction consisted of all members made of fibreglass, joined together using 316 grade stainless steel bracketry.

As it was necessary to have personnel access on the winch, a bridge section was developed to span the 7 metres between a bank of earth and the tower. GratEX® was used to make certain that all personnel accessing the tower would enjoy safe and secure footing in conjunction with RailEX®, Treadwell’s FRP hand railing system.

The structure was fully trial assembled and then partly dismantled and packed into modules to be delivered on time in full.

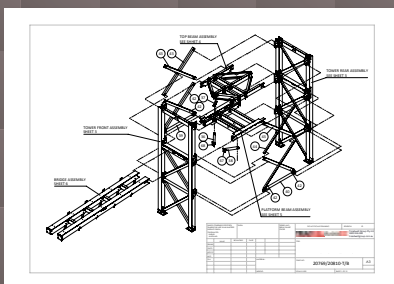
Project Challenges

- Significant corrosion issues due to the environment and exposure. A structure made from an alternative material was needed to ensure extended design life
- Weight restrictions was an issue given the allowable load on sensitive ground.
- Cyclone prone region of Western Australia.
- Stringent structural specifications to support certain weights.
- Remote region which hampers logistics and installation.
- Reduce the need for maintenance to focus on production.

PROJECT INFORMATION

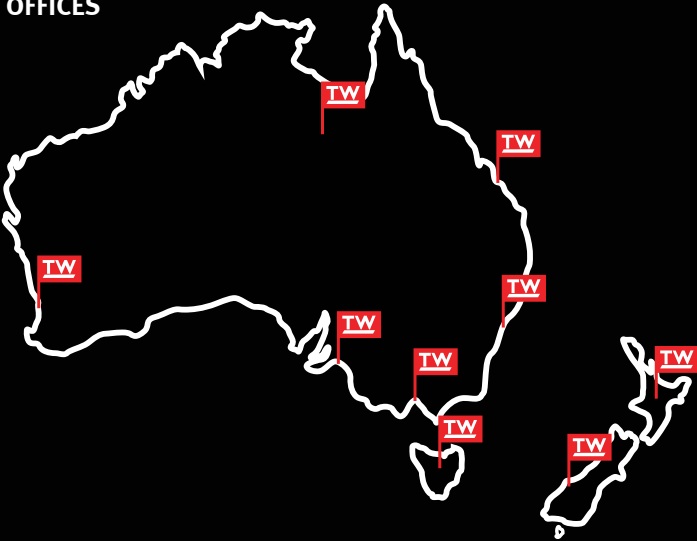
Project Category:	ArchitEX™ structure
Scope of Work:	Winch tower at solar salt production facility
Treadwell Products:	ArchitEX™ FRP profiles GratEX® FRP grating RailEX® FRP handrails
Total Project Value:	\$150,000

Treadwell Solution:



- 1 ArchitEX™ FRP columns, beams and other supporting profiles were specified as the skeleton of the structure. GratEX® FRP grating and RailEX® FRP handrail were supplied to provide safe access. Specially formulated resin was categorically determined to withstand the corrosion
- 2 The ArchitEX™ profiles were tested to be cyclone rated.
- 3 Being lightweight and easy to install, FRP is very manageable during construction.
- 4 Given the nature of FRP, any system utilising it is virtually maintenance free.
- 5 FRP is high in strength. Based on the resin formula and engineered design, the structure was capable to support the heavy duty winch.

OFFICES



ABOUT TREADWELL

At Treadwell Group, our core business divisions have been developed utilising the latest fibreglass reinforced plastic (FRP) technology. With constant innovation and evolution of our offerings, we grow in competence with each experience in delivering unparalleled solutions to a diversified index of industries which include the water and wastewater, mining, oil and gas, public infrastructure and marine sectors. The progression of our products has been focused on ensuring extended design life in varied applications, enabling us to support our continuing commitment to satisfy and add value to our client's endeavours.

Australia

▶ **ADELAIDE (HEAD OFFICE)**

58 Deeds Road
NORTH PLYMPTON SA 5037

**Distribution Centres
(Strictly by appointment only)**

▶ SYDNEY

2 Coal Pier Road,
Banksmeadow, NSW 2109

▶ MELBOURNE

107 Gateway Boulevard, Epping,
VIC 3076

▶ BRISBANE

4 Howard Smith Drive,
Port of Brisbane, QLD 4178

▶ PERTH

1179 Abernethy Road,
Hazelmere, WA 6055

▶ DARWIN

8 College Road, Berrimah,
NT 0828

▶ HOBART

41 Evans Street, Hobart,
TAS 7000

▶ BURNIE

8 River Road, Wivenhoe,
TAS 7320

New Zealand

**Distribution Centres
(Strictly by appointment only)**

AUCKLAND

12 Southdown Lane,
Penrose, Auckland 1061

▶ CHRISTCHURCH

31 Baigent Way, Middleton,
Christchurch 8024

Australia

P 1800 246 800

sales@treadwellgroup.com.au

F 1300 763 521

treadwellgroup.com.au

New Zealand

P 0800 246 600

sales@treadwellgroup.co.nz

F 0800 244 600

treadwellgroup.co.nz