

Fertiliser Manufacturing Plant Bund Crossover

Our client operates a number of liquid fertiliser manufacturing plants which are based at Moree and Griffith in New South Wales and Boundary Bend in Victoria. At the Boundary Bend plant, traditional materials have not lasted long in a crossover system over a bund wall that has corrosive chemicals present.

Treadwell was charged with the challenge of developing a crossover system that had a design life that could endure beyond what traditional materials could.

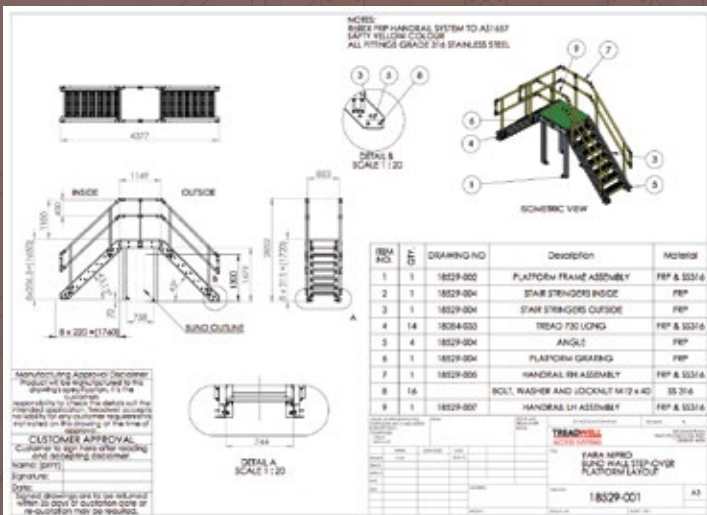
Project Challenges

- The obvious challenge was to construct a crossover entirely out of an alternative material that has a durable design life against the acerbic environment.
- The cost of maintenance of the facility was another major concern once installed as experience with previous materials required consistent attention to upkeep the usability of the crossover.

PROJECT INFORMATION

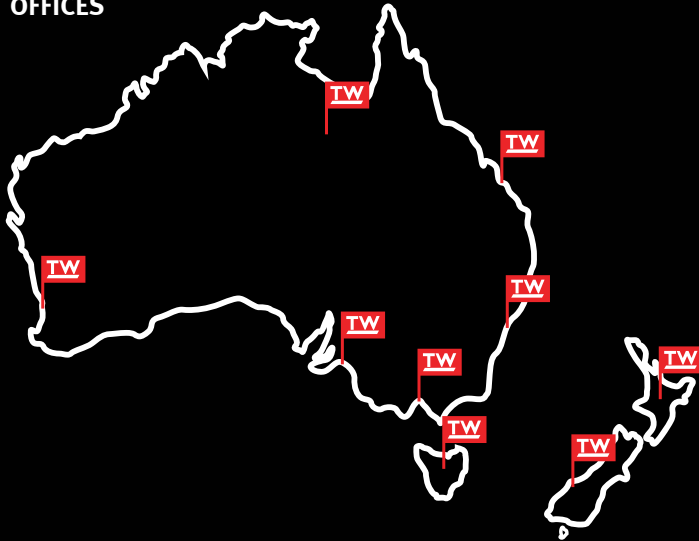
Project Category:	ArchitEX™ Crossover system
Scope of Work:	Crossover system for chemical bound
Treadwell Products:	ArchitEX™ Crossover system
Value:	\$8,000

Treadwell Solution:



- 1 The ArchitEX™ Crossover System was designed and manufactured with corrosion resistant GratEX® FRP grating, RailEX® FRP handrails and a range of ArchitEX™ FRP structural profiles which are manufactured from premium grade fibreglass resins that was categorically specified to withstand the corrosive.
- 2 FRP is simply fabricated and modified on site. This means there is no need for any hot works permit.
- 3 Being lightweight and easy to install, FRP is very manageable during construction.
- 4 Given the nature of FRP, any system utilising it is virtually maintenance free, thus keeping maintenance costs as low as possible.

OFFICES



ABOUT TREADWELL

At Treadwell Group, our core business divisions have been developed utilising the latest fibreglass reinforced plastic (FRP) technology. With constant innovation and evolution of our offerings, we grow in competence with each experience in delivering unparalleled solutions to a diversified index of industries which include the water and wastewater, mining, oil and gas, public infrastructure and marine sectors. The progression of our products has been focused on ensuring extended design life in varied applications, enabling us to support our continuing commitment to satisfy and add value to our client's endeavours.

Australia

▶ **ADELAIDE (HEAD OFFICE)**

58 Deeds Road
NORTH PLYMPTON SA 5037

Distribution Centres

(Strictly by appointment only)

▶ SYDNEY

2 Coal Pier Road,
Banksmeadow, NSW 2109

▶ MELBOURNE

107 Gateway Boulevard, Epping,
VIC 3076

▶ BRISBANE

4 Howard Smith Drive,
Port of Brisbane, QLD 4178

▶ PERTH

1179 Abernethy Road,
Hazlemere, WA 6055

▶ DARWIN

8 College Road, Berrimah,
NT 0828

▶ HOBART

41 Evans Street, Hobart,
TAS 7000

▶ BURNIE

8 River Road, Wivenhoe,
TAS 7320

New Zealand

Distribution Centres

(Strictly by appointment only)

▶ AUCKLAND

12 Southdown Lane,
Penrose, Auckland 1061

▶ CHRISTCHURCH

31 Baigent Way, Middleton,
Christchurch 8024

Australia

P 1800 246 800
F 1300 763 521

sales@treadwellgroup.com.au
treadwellgroup.com.au

New Zealand

P 0800 246 600
F 0800 244 600

sales@treadwellgroup.co.nz
treadwellgroup.co.nz