

RailEX® Round Componentry



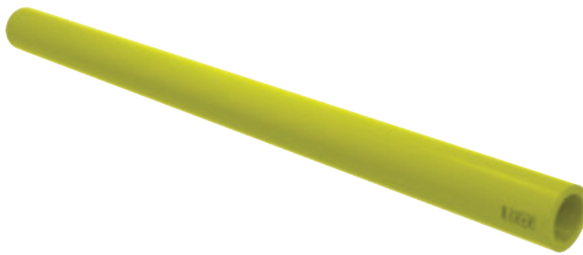
RailEX® Componentry

Developed to compliment Treadwell™'s range of corrosion resistant structural solutions, RailEX® offers you the ideal solution for the harshest of destructive, chemical, laden environments, both inside and out.

All of the RailEX® components are completely fibreglass reinforced plastic (FRP) and are coated with a two pack UV resistant coating to provide the peace of mind that premature breakdown of the product will not result from exposure to the elements.

Standard Componentry

RXH-R-TR



Fixing Code:	N/A	Maximum Length:	3 metres
--------------	-----	-----------------	----------

Description:
Standard Round Fibreglass Top Rail

RXH-R-MR



Fixing Code:	N/A	Maximum Length:	1.45 metres
--------------	-----	-----------------	-------------

Description:
Standard Round Fibreglass Mid Rail

RXH-R-ST



Fixing Code:	N/A	Maximum Height:	1.25 metres
--------------	-----	-----------------	-------------

Description:
Standard Round Fibreglass Stanchion

RXH-R-CCJ



Fixing Code:	RXG-SFKo6	Unit:	Two
--------------	-----------	-------	-----

Description:
Standard Round Fibreglass 90° Corner Connection Joint

RXH-R-XCJ



Fixing Code:	RXG-SFKo6	Parts/Unit:	Two
--------------	-----------	-------------	-----

Description:
Standard Round Fibreglass Cross Connection Joint

RXH-R-TCJH2



Fixing Code:	RXG-SFKo6	Parts/Unit:	Two
--------------	-----------	-------------	-----

Description:
Standard Round Fibreglass Tee Connection Joint, with two holes (only to be used where there is no join in the rail that the joint is supporting)

RXH-R-TCJH3



Fixing Code:	RXG-SFKo6	Parts/Unit:	Two
--------------	-----------	-------------	-----

Description:
Standard Round Fibreglass Tee Connection Joint, with three holes

RXH-R-TRJ



Fixing Code:	N/A	Parts/Unit:	One
--------------	-----	-------------	-----

Description:
Standard Round Fibreglass Top Rail Joiner (to be used in conjunction with the RXH-R-JCJH3)

RXH-R-CTCJ



Fixing Code:	RXG-SFKo6	Parts/Unit:	Two
--------------	-----------	-------------	-----

Description:
Standard Round Fibreglass Corner Tee Connection Joint

RXH-R-CXCJ

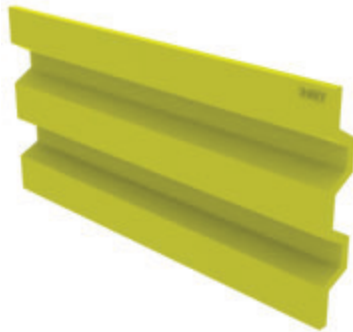


Fixing Code:	RXG-SFKo6	Parts/Unit:	Two
--------------	-----------	-------------	-----

Description:
Standard Round Fibreglass Corner Cross Connection Joint

Kick Plate

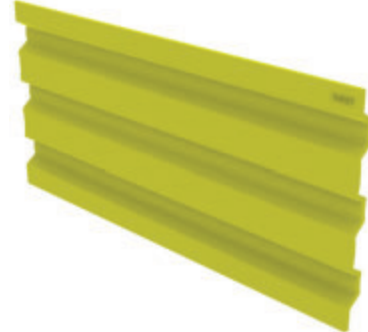
RXH-R-KP(R)



Fixing Code:	RXG-KSF	Parts/Unit:	One
--------------	---------	-------------	-----

Description:
Standard Fibreglass Kick Plate High

RXH-R-KP(H)



Fixing Code:	RXG-KSF	Parts/Unit:	One
--------------	---------	-------------	-----

Description:
Standard Round Fibreglass Side Mounting Bracket

Mounting Componentry

RXH-R-SMB



Fixing Code:	Various	Parts/Unit:	One
--------------	---------	-------------	-----

Description:
Standard Round Fibreglass Side Mounting Bracket

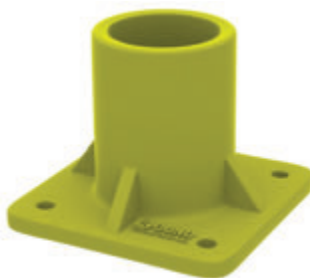
RXH-R-NMB



Fixing Code:	Various	Parts/Unit:	One
--------------	---------	-------------	-----

Description:
Standard Round Fibreglass Narrow Mounting Bracket

RXH-R-WMB



Fixing Code:	Various	Parts/Unit:	One
--------------	---------	-------------	-----

Description:
Standard Fibreglass Wide Base Mounting Bracket

RXH-R-IGS



Fixing Code:	N/A	Parts/Unit:	One
--------------	-----	-------------	-----

Description:
Standard Round In-Ground Sleeve Mounting Bracket.

Adjustable Componentry

RXH-R-ACCJ



Fixing Code:	RXG-SFKo6	Parts/Unit:	Four
--------------	-----------	-------------	------

Description:
Adjustable Round Fibreglass Corner Joint

RXH-R-AXCJ



Fixing Code:	RXG-SFKo6	Parts/Unit:	Two
--------------	-----------	-------------	-----

Description:
Adjustable Round Fibreglass Cross Connection Joint

RXH-R-ATCJ



Fixing Code:	RXG-SFKo6	Parts/Unit:	Four
--------------	-----------	-------------	------

Description:
Adjustable Round Fibreglass Tee Connection Joint

Standard Componentry

RXH-KPSJ(I)

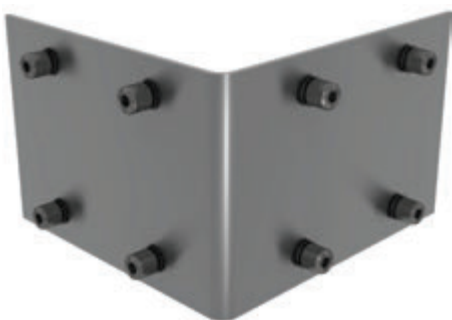


Fixing Code:	Included	Parts/Unit:	Nine
--------------	----------	-------------	------

Description:
Standard Stainless Steel Kick Plate 90° External Corner Joiner and Fixings

Standard Componentry

RXH-KPCJ(I)



Fixing Code:	Included	Parts/Unit:	Nine
--------------	----------	-------------	------

Description:
Standard Stainless Steel Kick Plate 90° External Corner Joiner and Fixings

RXH-FKPCJ(E)



Fixing Code:	Included	Parts/Unit:	Nine
--------------	----------	-------------	------

Description:
Standard Stainless Steel Kick Plate 90° Internal Corner Joiner and Fixings

Standard Componentry

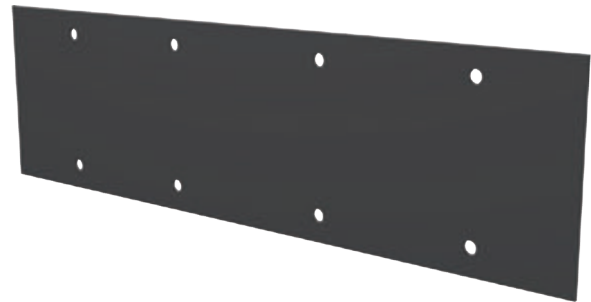
RXH-FKPCJ



Fixing Code:	Included	Parts/Unit:	One
--------------	----------	-------------	-----

Description:
Standard Fibreglass Kick Plate Corner Joiner

RXH-FKPSJ



Fixing Code:	RXG-RF	Parts/Unit:	One
--------------	--------	-------------	-----

Description:
Standard Fibreglass Kick Plate Straight Joiner

RXH-R-FKPS



Fixing Code:	RXG-RF	Parts/Unit:	One
--------------	--------	-------------	-----

Description:
Standard Round Fibreglass Kick Plate Support

RXH-SFK06



Fixing Code:	N/A	Parts/Unit:	Three
--------------	-----	-------------	-------

Description:
Standard Stainless Steel Fastener Kit M6 type

Fixing

RXH-RF



Fixing Code:	N/A	Parts/Unit:	One
--------------	-----	-------------	-----

Description:
Standard Stainless Steel Rivet Fastener

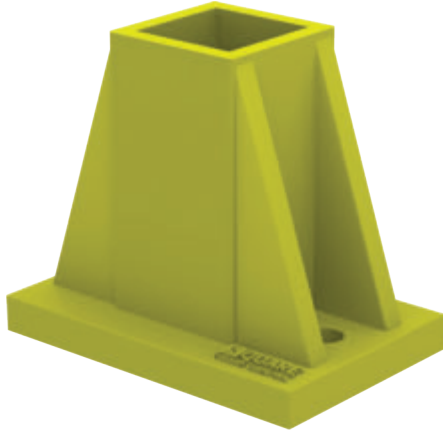
RXH-KSF



Fixing Code:	N/A	Parts/Unit:	Four
--------------	-----	-------------	------

Description:
Standard Stainless Steel Kick Plate to Stanchion Fastener Kit

RailEX® Square Componentry



RailEX® Componentry

Developed to compliment Treadwell™'s range of corrosion resistant structural solutions, RailEX® offers you the ideal solution for the harshest of destructive, chemical, laden environments, both inside and out.

All of the RailEX® components are completely fibreglass reinforced plastic (FRP) and are coated with a two pack UV resistant coating to provide the peace of mind that premature breakdown of the product will not result from exposure to the elements.

Standard Componentry

RXH-S-R



Fixing Code:	N/A	Maximum Length:	3 metres
--------------	-----	-----------------	----------

Description:
Standard Fibreglass Rail

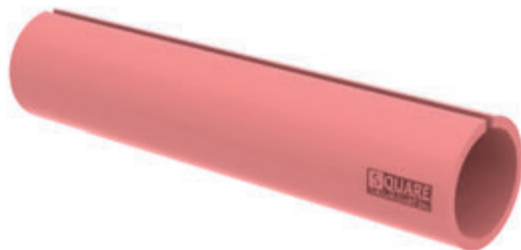
RXH-S-CCJ



Fixing Code:	N/A	Parts/Unit:	Two
--------------	-----	-------------	-----

Description:
Standard Fibreglass Corner Connection Joint

RXH-S-XCJ

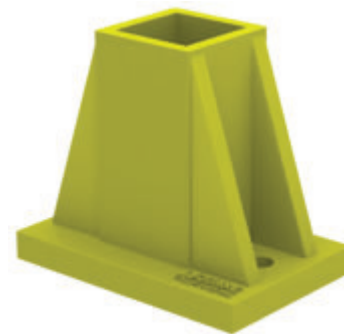


Fixing Code:	N/A	Parts/Unit:	One
--------------	-----	-------------	-----

Description:
Standard Fibreglass Cross Corner Connection Joint

Mounting Componentry

RXH-S-NMB



Fixing Code:	EXH-SFK	Parts/Unit:	One
--------------	---------	-------------	-----

Description:
Standard Fibreglass Narrow Manting Bracket